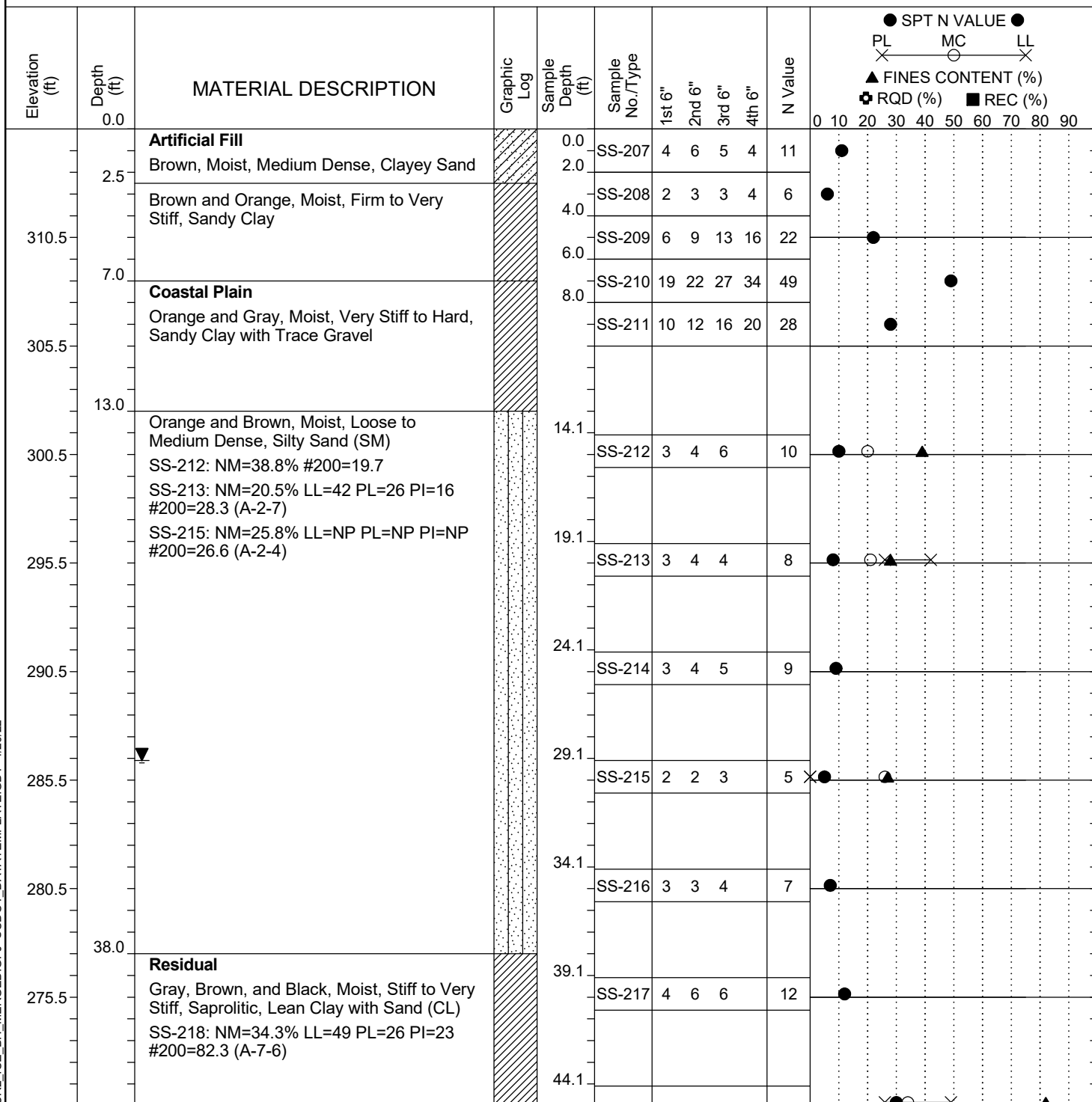


Project ID:	P039719	County:	Richland	Boring No.:	G-130
Site Description:	Carolina Crossroads Phase 2 - Bridge 42B			Route:	Broad River Rd.
Eng./Geo.:	M. Stanbury	Boring Location:	204+99	Offset:	104 LT
Elev.:	315.5 ft	Latitude:	34.03990117	Longitude:	-81.09327556
Date Started:	2/24/2022				
Total Depth:	70.5 ft	Soil Depth:	70.5 ft	Core Depth:	N/A ft
Date Completed:	2/24/2022				
Bore Hole Diameter (in):	2.25	Sampler Configuration	Liner Required: Y (N)		Liner Used: Y (N)
Drill Machine:	D-50 #439	Drill Method:	RW	Hammer Type:	Automatic
Energy Ratio:	90.8%				
Core Size:	N/A	Driller:	R. Cassell	Groundwater:	TOB N/A
24HR	29.1 ft				



LEGEND

Continued Next Page

SC_DOT 20-01_CCR2_ICE_BH_MERGED.GPJ SCDOT_DATATEMPLATE.GDT 4/20/22

SAMPLER TYPE		DRILLING METHOD	
SS - Split Spoon	NQ - Rock Core, 1-7/8"	HSA - Hollow Stem Auger	RW - Rotary Wash
UD - Undisturbed Sample	CU - Cuttings	CFA - Continuous Flight Augers	RC - Rock Core
AWG - Rock Core, 1-1/8"	CT - Continuous Tube	DC - Driving Casing	